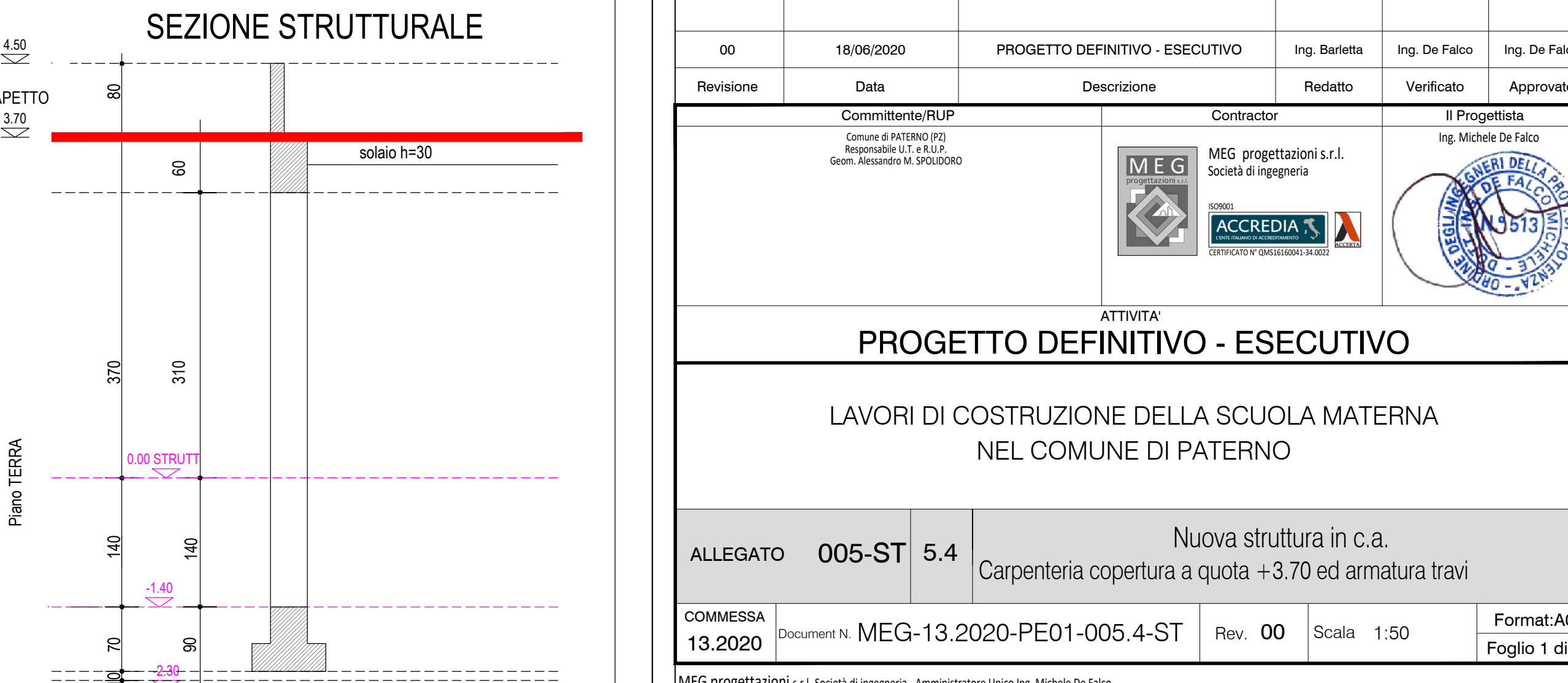
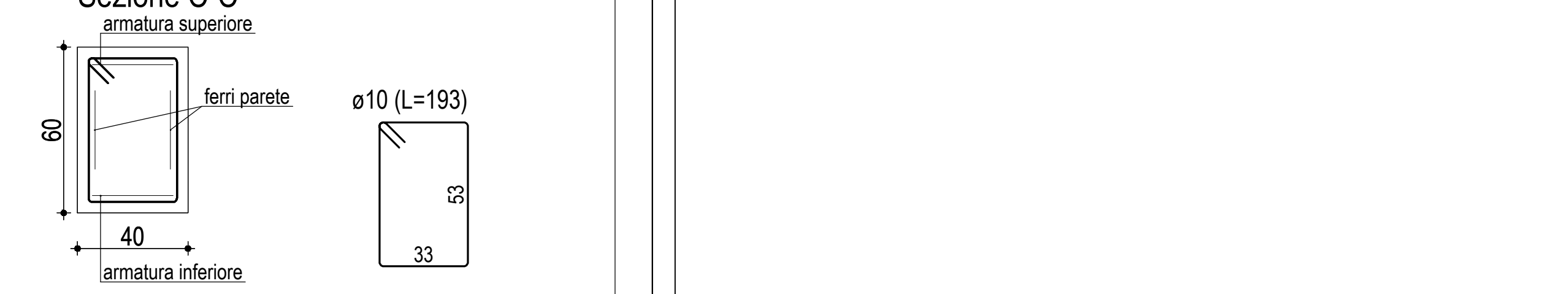
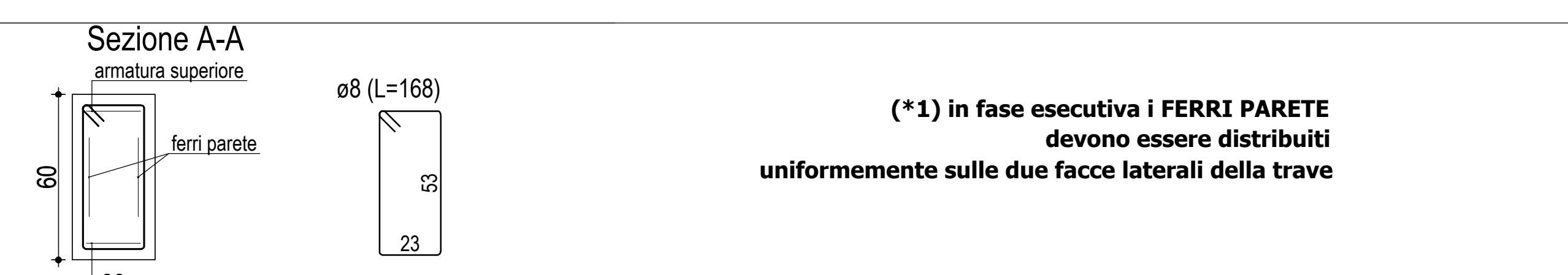
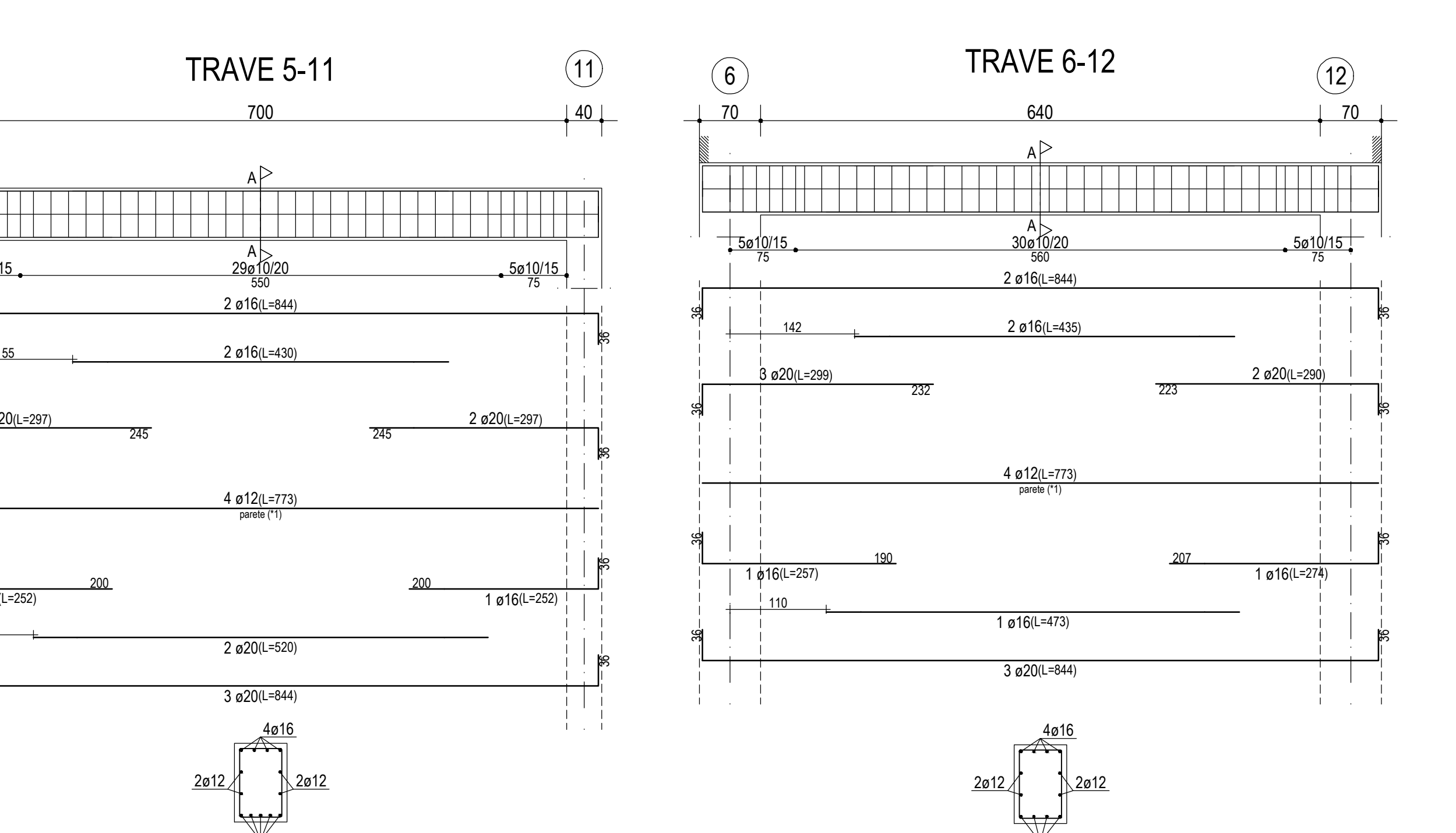
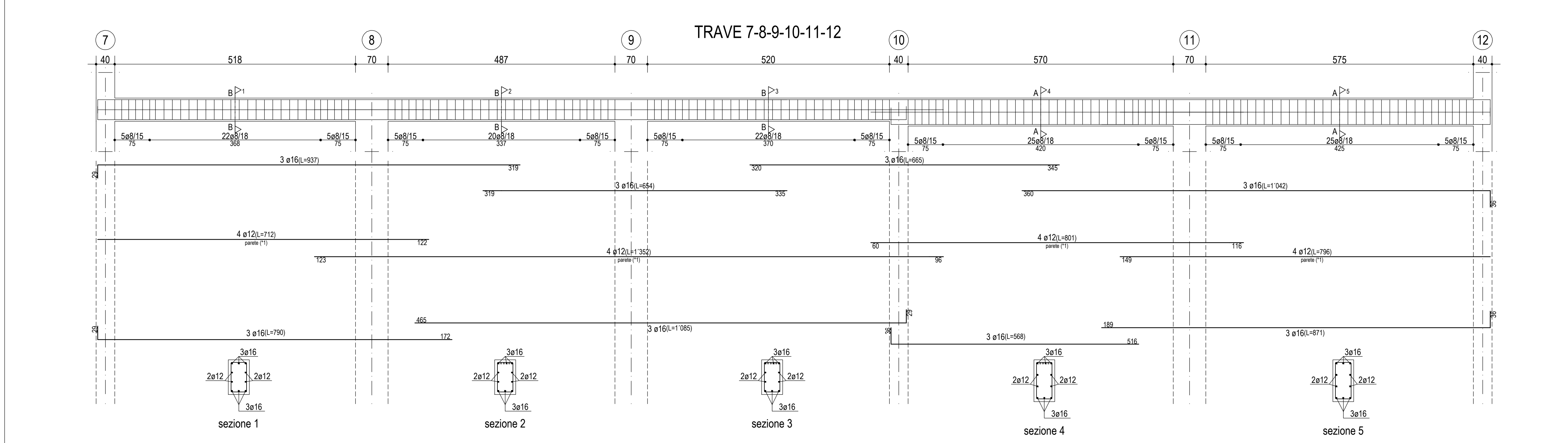
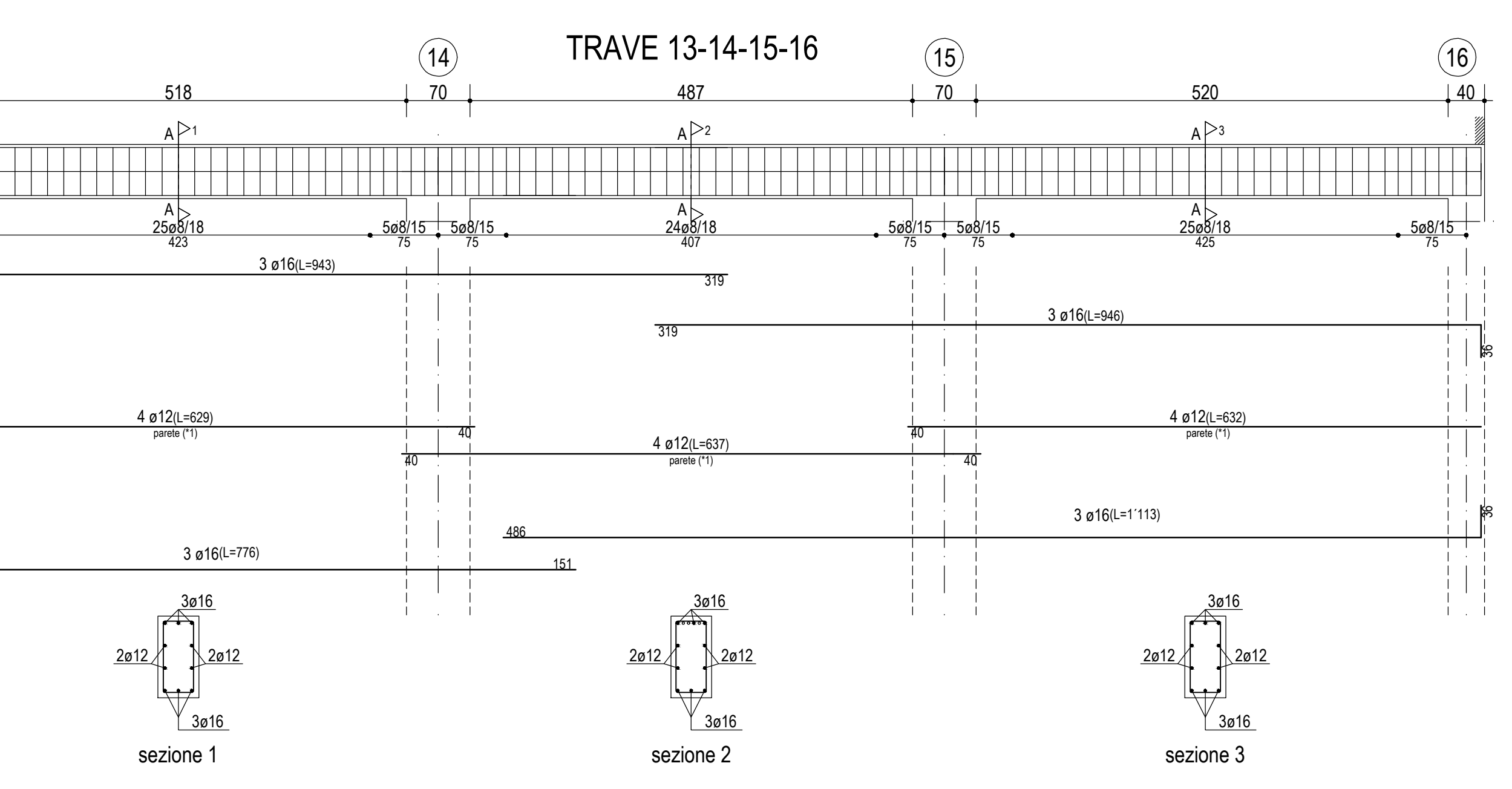
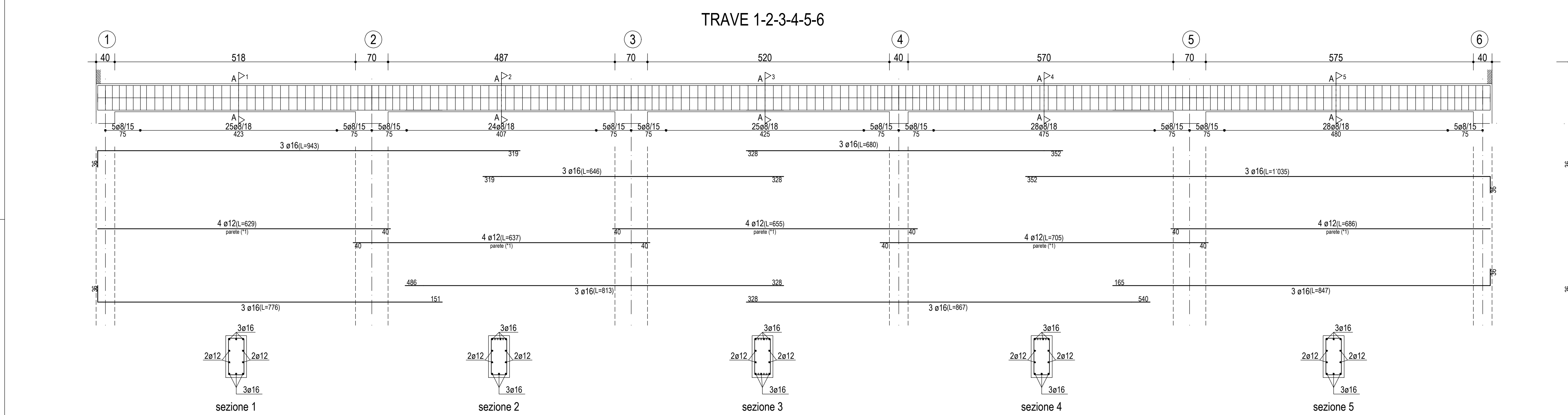
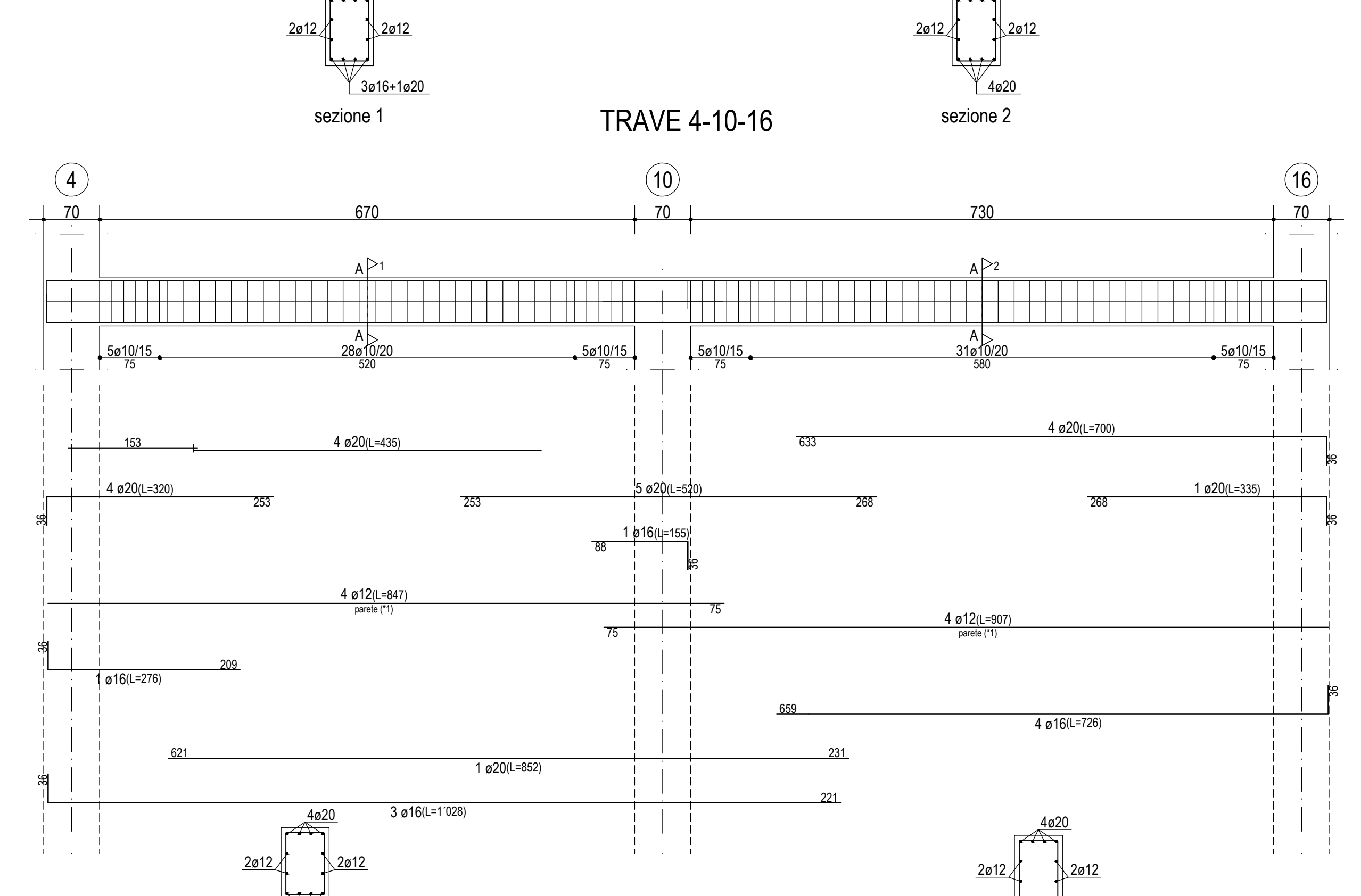
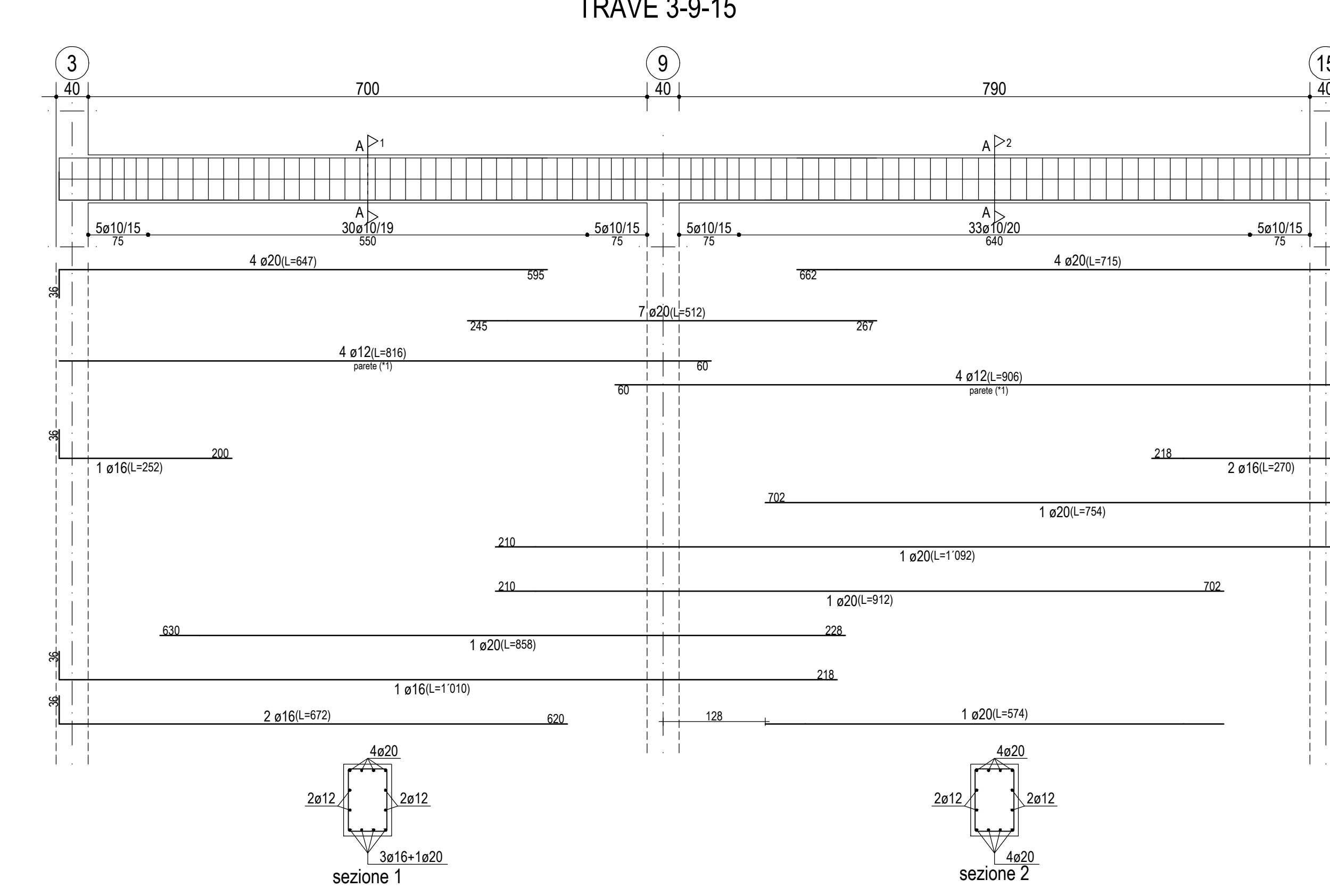
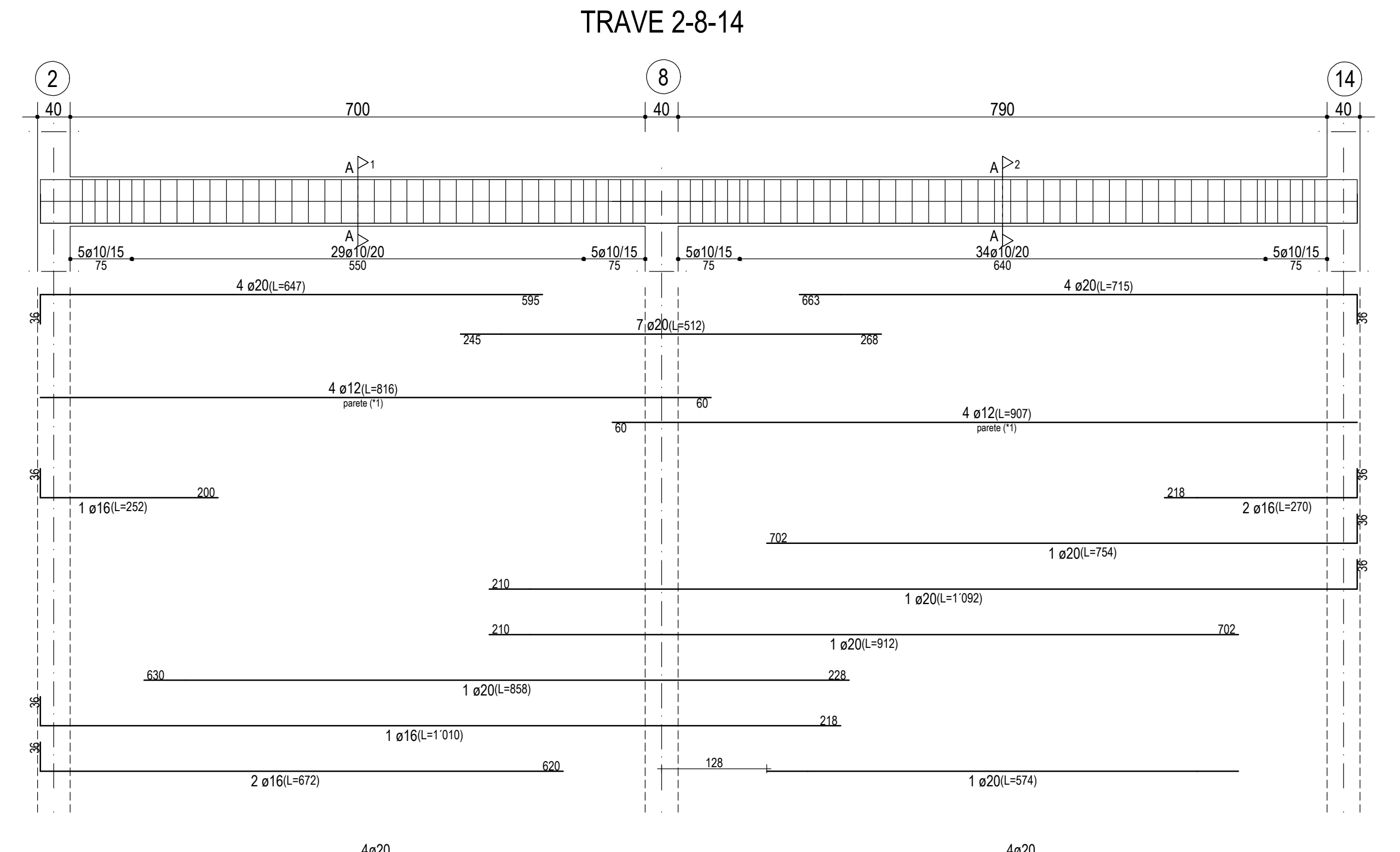
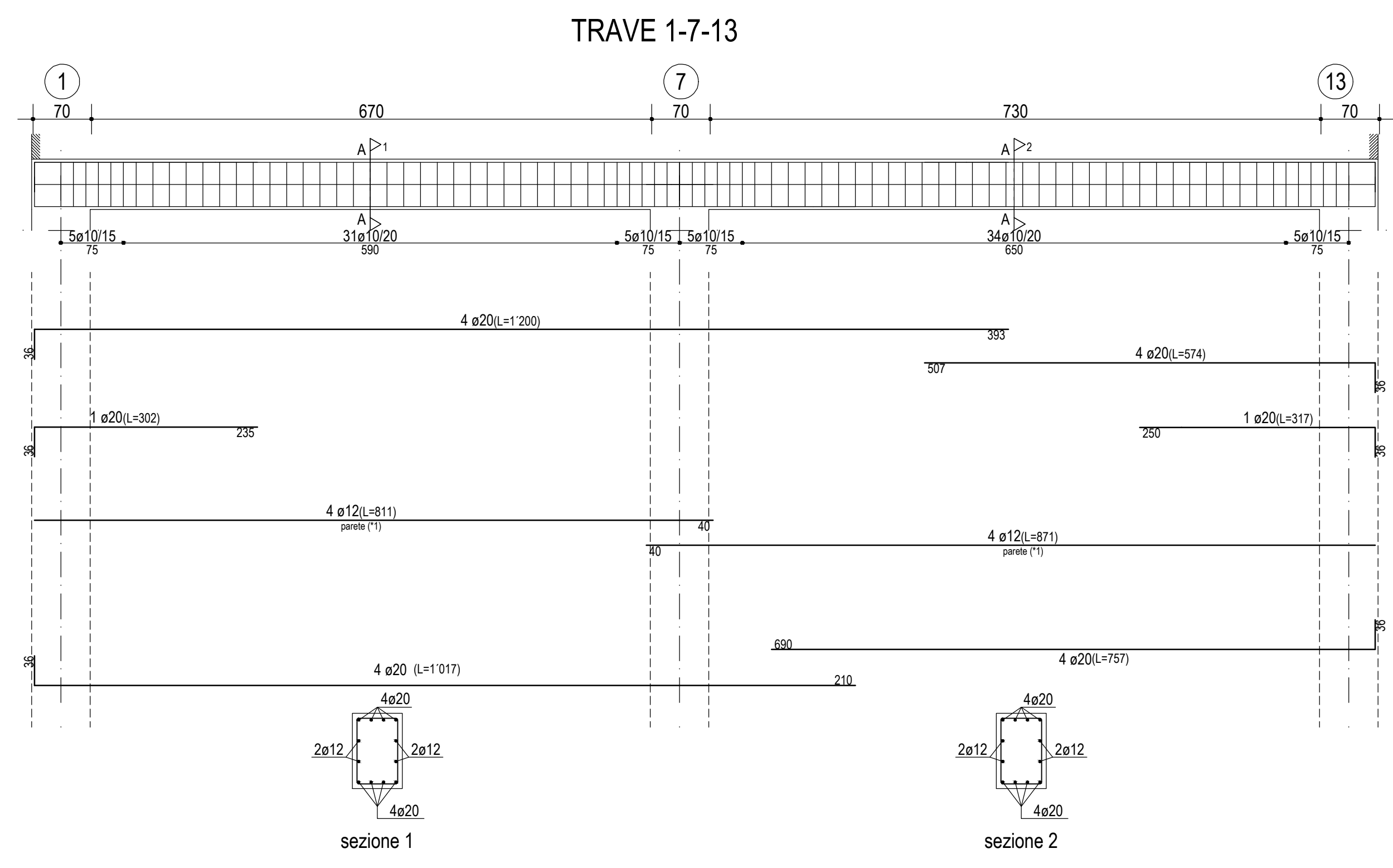
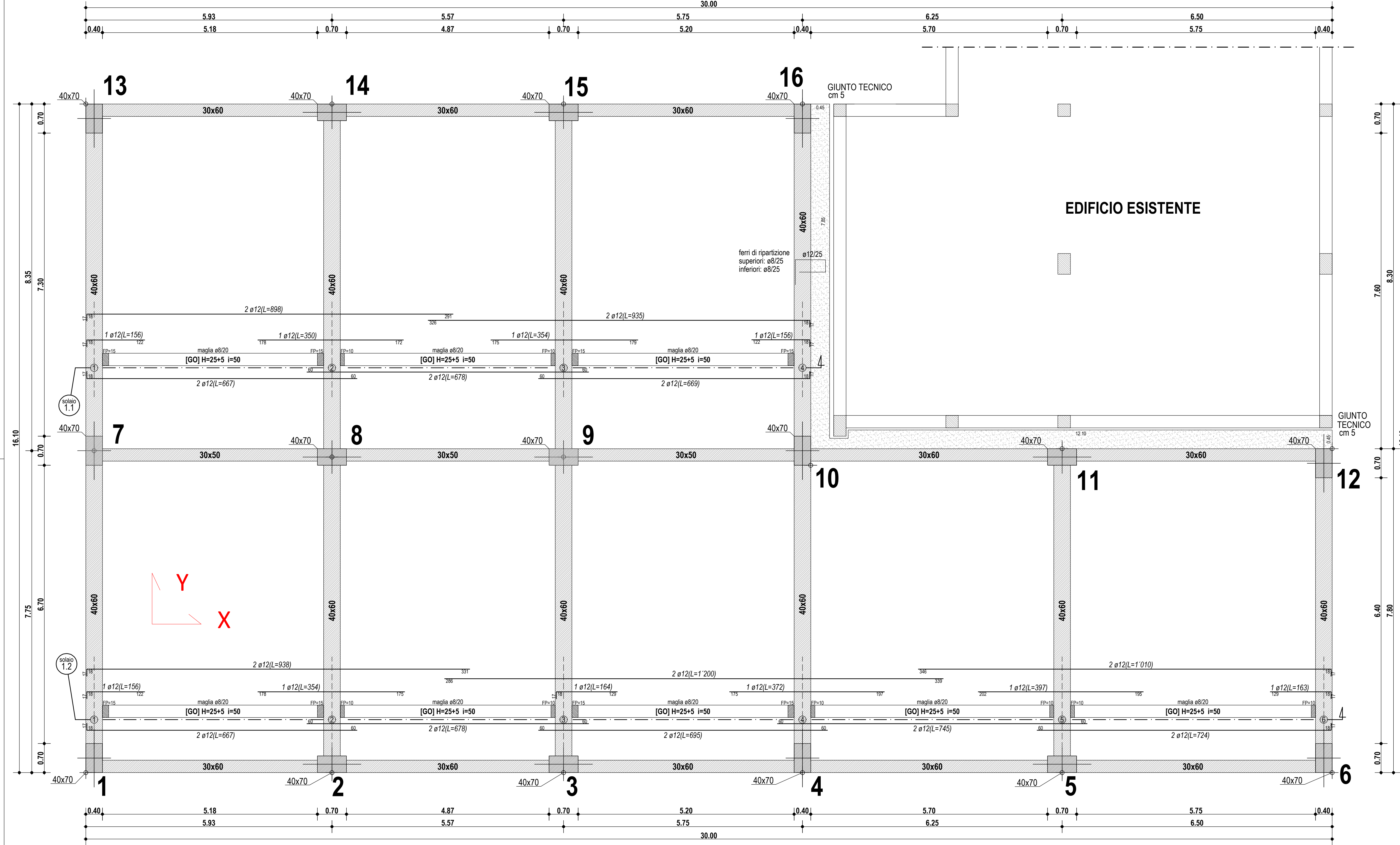


PIANO QUOTA +3.7

SOLAIO GETTATO IN OPERA CM 25+5
SBALZI IN C.A. A SOLETTA PIENA CM 20



(*1) in fase esecutiva i FERRI PARETE devono essere distribuiti uniformemente sulle due facce laterali della trave

Regione Basilicata - Provincia di Potenza
Comune di PATERNO

Revisione	Data	Descrizione	Redatto	Verificato	Approvato
00	18/06/2020	PROGETTO DEFINITIVO - ESECUTIVO	Ing. Barletta	Ing. De Falco	Ing. De Falco

PROGETTO DEFINITIVO - ESECUTIVO

LAVORI DI COSTRUZIONE DELLA SCUOLA MATERNA
NEL COMUNE DI PATERNO

ALLEGATO 005-ST 5.4 Nuova struttura in c.a.
Carpenteria copertura a quota +3.70 ed armatura travi

COMMESSA 13.2020 Document N. MEG-13.2020-PE01-005.4-ST Rev. 00 Scala 1:50 Formad-A0 Foglio 1 di 1